

Saltburn Photographic Society Welcome Pack

Welcome to Saltburn Photographic Society

The intention of this welcome pack is to speed up the integration of new members into the Society. It should provide you with most of the information that you will need to know to inform you about the key aspects of what we have to offer.

More detailed information can be found on our website
www.saltburnphotographicsociety.co.uk

If you have any questions please ask any of our existing members who will introduce you to the relevant committee member if they are unable to answer your query themselves.

Our overriding objective is to bring like minded people together to enjoy their photography and to learn from each other. You are very welcome and we hope that you will remain a member for many years.

If you have any suggestions about how this welcome pack can be improved, please contact Malcolm Blenkey directly or by e.mail on mblenkey2@tiscali.co.uk.

Content	Page No.
Introduction	1
History of the club	2
Aims of the Society	2
Syllabus Overview	2
Meeting Place	2
Practical Nights	3
Summer Outings	3
Competitions	3
Mounting of Prints for competitions	4
Digitally Projected Images	4
Mentors	4
Website	5
Exhibitions	5
Grants	5
North Yorks South Durham Photographic Association	5
Membership Fees	6
Committee	6
Competition Rules (Appendix 1)	8
Digitally Projected Image Guidelines (Appendix 2)	11

Saltburn Photographic Society Welcome Pack

History of the club

The First Photographic Society in Saltburn-by-the-Sea was formed following a successful exhibition held in conjunction with a celebration week for "Victory in Europe" in 1945. After just four years it folded in 1949, it bore the title "Saltburn and District Photographic Society."

At a meeting organised by members of Saltburn Toc H on Monday 22nd February 1960 forty-five people attended attracted by wide publicity throughout the area, it was agreed to re-form the Saltburn and District Photographic Society with regular meetings being held twice monthly in the Toc H Hall at the rear of Albion Terrace. Officials were duly elected and meetings began in a rather austere venue which boasted a coal stove in the centre of the room.

In 1962 meetings began to be held weekly using the Queen Hotel for the alternative weeks. The Saltburn Youth Hostel in Victoria Road became the meeting venue in 1963 and in 1964 the title of the society was shortened to Saltburn Photographic Society with a new logo introduced. 1967 saw a move to a new venue, Saltburn Infants School in Upleatham Street we improved our facilities by installing a large permanent screen which was donated to the school on our departure. After 28 years at the school, a sudden and large increase in the rent made us seek a new venue, this was the Saltburn Community Centre on Windsor Road where we stayed for eleven years until again rising costs made a move necessary.

2004 saw our weekly meetings being held in our present location, the upstairs room at the Milton Street Methodist Hall.

Aims of the Society

The aims and the objectives of the Society are to encourage and advance the art of photography and to provide a facility for the residents of Saltburn and the surrounding area to achieve this aim.

Syllabus Overview

The syllabus content is something that has evolved and changed to meet the needs and preferences of the members over the fifty years that the club has existed. It is the syllabus Secretary's responsibility to try and develop a programme that is both entertaining and informative for our membership. This is how we have established the current mix of presentations from visiting speakers which regularly include practical tips on how to improve our photography and a variety of competitions to allow members to showcase their individual efforts and gain independent feed back from experienced external judges.

The North Yorks & South Durham Photographic Association (of which we are part) produces an annually revised handbook which provides a list of speakers and topics from each of the member clubs. This is used in conjunction with personal recommendations and members' requests to compile a fresh syllabus each season. This process begins early in each calendar year to ensure that the chosen speakers are booked in time for the following season. Consequently the Syllabus Secretary is planning up to fifteen months in advance and your input to this process is very welcome. A facility has been provided on the Society's website for members to record their views on what they would like to see in future programmes.

Meeting Place

We meet at the **Methodist Church Hall, Milton Street**, Saltburn on Wednesdays - 7.30 p.m. prompt during the season which runs from the middle of September until the end of March.

The room is accessed by the stairs from the main door on Milton Street. Wheelchair access is possible by the main door and a door steward will be on hand for those requiring assistance. There is also a lift available for anyone not able to use the stairs.

Saltburn Photographic Society Welcome Pack

We have coffee and tea making facilities and members generally take the opportunity to socialise and gain photographic advice from our many experienced members following each week's activities. We ask members to respect that this is a **silent mobile phone** zone as interruptions by mobile phones can be very distracting for the members and visiting speakers/judges.

Assistance from the members in setting out/clearing away tables, chairs and the tea/coffee making facilities at the start and finish of each evening is very much appreciated.

Practical Nights

In addition to the Wednesday night programme we also provide a Practical Night programme on a monthly basis throughout the season. These sessions are normally held on the second Monday of the month between October and March i.e. six sessions per season. The topics covered are in the main designed to meet the members' needs. Members have the opportunity to make their requests known by various means e.g. verbal and written requests or via the website forum (see below). From these requests a programme is developed and advertised in advance so that members can choose to attend any that they think will be of value to them. Generally these sessions are delivered by our experienced members who have the relevant expertise. This provides the opportunity for more detailed demonstration and interactive questions and answers than can be provided in the normal Wednesday night programme.

These sessions will generally be held in the one of the rooms in the Methodist Church starting at 7 pm prompt, lasting approximately two hours. The time, date and room used for these sessions can vary, so please keep an eye out for announcements/notification of any changes.

As this is additional to our normal activities, members who take part will be asked to donate £1 per session to cover the cost of renting the room

Summer Outings

Between the months of April and September various events are listed in advance so that members who wish to take part can still meet with the aim of taking photographs and gaining informal advice or tuition. These events take the form of:

1. Monthly outdoor photography walks held on the first Wednesday of the month between May and August, starting at 7pm and normally finishing about 9 pm.
2. Various nominated local events that will provide plenty of photographic opportunities. These events have no formal meeting time to allow members the flexibility to suit their own convenience.
3. An annual one day trip to venues such as the Lake District or National Railway Museum

All of the above are eligible for the Les Gould Trophy competition for images taken on Society outings.

In addition to this members meet informally at various venues suggested by the members that are listed on the website forum. Where again there is opportunity to simply socialise or gain advice from similarly minded members.

Competitions

To improve your photography nothing works better than showing your pictures alongside your peers and having them constructively commented on by experienced photographic judges. By listening to the advice provided regarding both your own and others' photographs it is possible to progress from an absolute beginner to an accomplished photographer over the period of a few seasons. We provide the opportunity for this in the form of monthly and

Saltburn Photographic Society Welcome Pack

annual internal club competitions allowing you to compete at your respective level be it; junior, intermediate or advanced.

Advice on how to prepare entries for competitions both in the form of prints and digitally projected images is provided for members who are new to this element of photography.

See Appendix 1 for competition rules.

Mounting of Prints for Competitions

All prints must be mounted on suitable board before they are submitted for competitions (see the relevant size requirements in the general rules in Appendix 1). It is important that this is done correctly so that your own and other prints submitted for the competitions are not damaged. Particular care should be exercised when using materials (glue or tape) that could leave a sticky surface. When using tape we recommend that you use "Scotch Magic Tape" or similar, as normal masking tape tends to peel and loosen after being handled several times. The Competition Secretary can reject any print at his discretion which he believes may cause damage to other entries.

Prints may be printed by the author or by a processing house. The finished prints can then either be surface mounted on board using suitable products e.g. photographic spray mount, or window mounted. If you would like any advice on this process please consult the Competition Secretary who will be pleased to show you examples and give any advice you may need.

After mounting the only information that should be added is a title on the back of the board. The competition title, your name and status should be added to the packaging used to submit your entry. In this way all entries remain anonymous to all but the Competition Secretary who will ensure that entries are submitted to the judge in the relevant class status.

Digitally Projected Images

This is the simplest way to start off in competitions as there is no need to go to the expense and trouble of printing and mounting your image. It is simply a matter of sizing your image to meet the competition and equipment requirements. The process for this is set out in Appendix 2 but just ask the Competition Secretary if you need any help. Our objective is to have as many of our members as possible, old and new, taking part in the competitions.

Images that are produced by any digital means are allowed, providing that no other person's work appears in that image, and if proof is required, then either the original file from the camera without any modification or manipulation, or the original negative/transparency must be made available.

Mentors

As a new member, possibly new to the world of club competitions, you may wish to take advantage of an informal mentoring facility provided by our experienced members. We have some very experienced members in all kinds of photography; action, portraiture, macro, landscape etc. who are willing to pass on their knowledge. This can be handled in what ever way you are comfortable with, for example getting the views of one or more of the experienced workers on your work can be a very useful way of gaining constructive feedback on how to improve your chances in the competitions or simply to improve your photography if you are not ready or perhaps interested in taking part in the competitions. Simply ask any of the committee members if you would like to take advantage of this and they will point you in the right direction to the relevant members who will be able to help you.

Saltburn Photographic Society Welcome Pack

Website

Our website www.saltburnphotographicsociety.co.uk has been developed with the intention of keeping all of our members up to date with what is going on within the club and other photographic events that may be of interest. It can also be accessed by members of the public who may want to find out about what we have to offer. This has been a great innovation as members can now check such things as; the future programmes of normal weekly and monthly practical nights, competition rules, competition results, forthcoming events etc. Also it provides a showcase of the members work in the form of galleries and links to members' websites. The website will provide many of the answers to any queries you may have about what is going on at Saltburn Photographic Society.

The website also provides the opportunity for our members to join a forum where members can raise any issues about the clubs operations or questions about photographic techniques they would like guidance on. We want members to enjoy themselves and the more experienced members to share their wealth of information with us all.

Exhibitions

In recent years we have established ourselves as a significant provider of high quality photographic exhibitions in public spaces. We have held two major exhibitions in the Kirkleatham Museum Pavilion and we have held several exhibitions in the Foreshore Building on Saltburn lower promenade. These exhibitions have generated significant public interest and have been a major source of new members, in addition to providing an opportunity for our members new and old to have their work displayed to professional standards to a wide public audience.

Grants

Our work in the community in the form of, supporting local school activities, providing free photographic training opportunities for the local community and general community cohesion has allowed us to be successful in receiving three significant grants. One from Awards For All lottery funding, one from Tees Valley Community Foundation and one from Redcar and Cleveland Council. This has provided us with funds that have allowed us to ensure that we have the latest equipment in line with the digital revolution in photography and also professional quality exhibition materials. This will ensure that we can offer our members a high quality product in all of our activities on an ongoing basis.

North Yorkshire & South Durham Photographic Association (NYSDPA)

This is an association of the thirteen photographic clubs in the local area. The objective of this association is to coordinate activities across the clubs so that they can improve their effectiveness in meeting the expectations of the members. Each year the association provides an updated list of lecturers and judges that are available for each club to draw from when compiling their syllabus for the following season. This provides a pool of local resources with many years of photographic experience that has served the association well for over fifty years.

An inter-club competition for all thirteen of the clubs who are members of the NYSDPA is held each year. There are several parts to the competition; inter-club prints, inter-club projected image, individual prints and individual slides. The competition is hosted by each member club on a rotational basis, Saltburn PS last hosted it in the 2007/08 season. Therefore it will be 2020 before we host it again assuming there are still thirteen clubs involved by then.

Each club that takes part in the inter-club prints and projected image competitions needs to submit 6 images in each class, with no more than 2 entries from any one person in each class. All classes are completely open i.e. no themes.

Saltburn Photographic Society Welcome Pack

All entries are marked out of 30 points by experienced judges from outside of the NYSDPA area. The points for each batch of the six of images for each club are totalled to establish the winning club of the print and projected image classes. And also the club that has the overall highest mark, therefore giving three trophies at club level.

In addition to trophies for the highest aggregate scores at club level, there are trophies for the highest individual scores for the best projected image, the best colour print and the best monochrome print.

In addition to the inter-club competition there are separate print and 35 mm slide competitions with their own trophies, for as many individuals who want to take part. As the print competition is popular only one entry per person is allowed, however two entries per person are allowed in the slide competition.

Each year we make a selection of our members' best images for these competitions. Following judging each club then shows the full set of images from all of the member clubs along with the judges recorded comments. This provides our members with the opportunity to see work which represents the highest standard of photography from our area. Saltburn PS has a long tradition of doing well in these competitions and it is our constant aim to assist our members in achieving high marks and possibly trophies in these highly prestigious competitions.

Membership Fees

Our current annual membership fees are:

Ordinary member	£20
Junior member (under 18)	£6
Family membership	£30
Country member	£10 (residents over 20 miles from Saltburn)

Half year subscriptions are possible for members who join after 31st December in that season.

Committee

The Society is supported by a Committee consisting of eight Officers and up to six ordinary Committee members

The **Officers** of the Society are elected at the Annual General Meeting and comprise:

- The President, who remains in office until another member is nominated and elected President.
- The Chairman (male or female), Vice-Chairman and Immediate Past Chairman, each to be elected for a term of two years. The Vice-Chairman proceeds automatically to the office of Chairman.
- Secretary, Treasurer, Syllabus Secretary and Competition Secretary, who are elected for a term of two years and are subject to re-election at the end of their term of office.

The ordinary members of the Committee serve for one year and are subject to re-election at the Annual General Meeting.

Any member proposed, seconded and elected by the members at the Annual General Meeting can fill any vacancies on the Committee, provided that notification is given in writing to the Secretary indicating their intention of being elected not less than fourteen days prior to the Annual General Meeting.

Saltburn Photographic Society Welcome Pack

The Committee may appoint sub-committees or other members to advise them or to carry out specific tasks. This provides the opportunity for members to have a direct influence in the Society's operations in matters that are of interest to them.

The current Committee is:



**President and Publicity
Tony Lynn (MBE)**



**Chairman
Mike Sidgwick**



**Vice Chairman & Newsletter
Alan Meek**



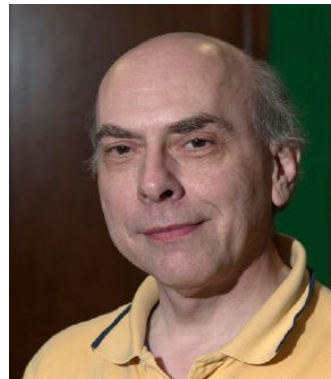
**Secretary
Tom Ridley**



**Treasurer
Christine Parker**



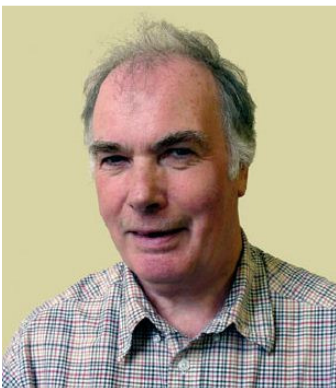
**Syllabus Secretary &
NY & SD Representative
Malcolm Blenkey**



**Competition Secretary
Alan Parker**



Lilian Waton



Alan Richmond



Dave Tindale



**Ian Horner
Website Design**



David Sanderson

Competition Rules

Appendix 1

ENTRY DATES are listed in the Society's programme.

Late entries will be accepted at the discretion of the Competition Secretary.

ALL ENTRIES must be: -

Titled, Produced from an original image taken by the entrant, Given to the Competition Secretary in a suitable container marked with: -

- (a) The photographer's name.
- (b) The competition entered.
- (c) The entry title.
- (d) The photographer's status (monthly competitions).

SLIDES: may be entered in the following competitions and will be judged as a projected image.

Monthly, Les Gould, Studio Tristan, Ladies, Michael Constable, Moore Trophy

In the above competitions with the exception of the Ladies; 2 slides or 1 slide and 1 digital projected image may be entered.

In the ladies competition 5 slides may be entered.

SLIDES must be: -

Mounted in 5 cm x 5 cm (2in x 2in) mounts.

Spotted (when the slide is viewed in its correct orientation, the spot should be at the bottom left hand corner of the mount).

PRINTS except Harry Brittain competition entries, must:-

Have a presented image of at least 310 sq. cm (48 sq in).

The only exception to this rule is for a rectangular print, which may be smaller in area providing it has one visible dimension of no less than 23 cm (9 in).

Be mounted, the mount must not be larger than 51 cm x 41 cm (20 in x 16 in).

DIGITAL images intended for projection using the Society's equipment must be: -

In the case of sequences (Moore trophy), provided as a self-contained executable file (i.e. an *.exe file) that requires no special software to run it.

In the case of individual images, supplied on CD or USB memory device in JPEG format, using a file naming convention of **Competition_Title_Photographer**

A maximum width of 1024 pixels and a maximum height of 768 pixels.

IMAGES previously entered in a competition must not be re-submitted in that competition.

ANY COMPETITION with fewer than 2 entrants shall be declared void.

ANNUAL COMPETITIONS

Les Gould Trophy

Awarded for the best photograph taken on a society outing

- (a) A maximum of 2 images per entrant.
- (b) Slides, prints and/or projected digital images may be entered.
- (c) Entries must have been taken in the calendar year ending 31st October of the current season.

Saltburn Photographic Society Welcome Pack

Studio Tristan Trophy

Awarded for the best photograph of people

- (a) A maximum of 2 images per entrant.
- (b) Slides, prints and/or projected digital images may be entered.

Harry Brittain Memorial Trophy

Awarded for the best un-mounted print or projected digital image on any subject

- (a) A maximum of 2 images per entrant.
- (b) Print maximum size 12.5cm x 17.5 cm (5 in x 7 in).
- (c) Winners of any trophy (apart from the Harry Brittain Salver) in a previous season and members of advanced status are ineligible.
- (d) Entries must have been taken within 2 years of the competition date.

Jarvis Trophy

Awarded for the best set of 5 monochrome prints on a theme

- (a) One set per entrant.

Lynn Trophy

Awarded for the best set of 5 colour prints on a theme

- (a) One set per entrant.

Ladies Trophy

Awarded for the best set of 5 images

- (a) One set per entrant.
- (b) A set may be 5 slides or 5 prints or 5 projected digital images.
- (c) Open to all female members.

Frank Sanderson Trophy

Awarded to the winner of a "knock out" projected image competition

- (a) A maximum of 2 projected digital images per entrant.

Note: - Images are shown in pairs and judged by the audience; the winning image goes through to the next round.

In the event of a tie, the chairman will nominate a non-entrant to have a casting vote.

Michael Constable Trophy

Awarded for the best photograph illustrating the natural world

- (a) A maximum of 2 slides and 2 prints may be entered.

Moore Trophy

Awarded for the best set of projected images (Slides or digital) with live or recorded accompaniment

- (a) One set per entrant.
- (b) Time – maximum 10 minutes.
- (c) Entrants may work individually or in pairs.

MONTHLY COMPETITIONS

THEMES

There are 4 competitions each season; the themes are shown in the syllabus.

TROPHIES

R T McKenna Trophy - Awarded for the highest aggregate mark in the advanced projected image class.

Rosebowl - Awarded for the highest aggregate mark in advanced prints class.

Bowers Brittain Trophy - Awarded for the highest aggregate mark in intermediate projected image class.

Saltburn Photographic Society Welcome Pack

Cooke Trophy - Awarded for the highest aggregate mark in intermediate prints class.

Junior Trophy - Awarded for the highest aggregate mark in any medium.

STATUS

An advanced photographer is a member who: -

Has been in the advanced section of any society.

Has won the intermediate trophy on 2 consecutive occasions or 3 times in total.

Elects to join the advanced section after winning the intermediate trophy in the previous season.

Has been granted advanced status by submitting a selection of recent work to a selection committee of the society.

An intermediate photographer is a member who: -

Is not qualified for the advanced section.

Is an advanced photographer who has not won any competitions since gaining advanced status and wishes to return to this class.

A junior photographer is a member who: -

Is less than 18 years of age on 1st September of the current season.

MARKING

Members may enter a maximum of 2 projected images and 2 prints in each eligible status.

When a member enters 2 photographs in a single competition, both entries will be marked.

Only the highest scoring entry in that competition will contribute to the annual award.

Acceptable image sizes

All images must be submitted within a pixel size of 1024 x 768 to comply with the resolution of the projector. The image format must be JPEG to ensure consistency and compatibility with the presentation software.

The following are typical sizes expected.

Landscape Format

4:3 aspect ratio (typical digital compact): 1024 x 768 pixels (width x height)

3:2 aspect ratio (typical digital SLR): 1024 x 683 pixels (width x height)

If you have deliberately cropped the image the width should remain at 1024 pixels but the height may be less than the values shown above

Portrait Format

4:3 aspect ratio (typical digital compact): 768 x 576 pixels (height x width)

3:2 aspect ratio (typical digital SLR): 768 x 512 pixels (height x width)

If you have deliberately cropped the image the height should remain at 768 pixels but the width may vary depending on the final image proportions chosen.

How to prepare your images

The following is a procedure for preparing your images for submission to the digitally projected image category.

Image naming convention

All image files titles must contain the following information: -

- Competition Title
- Image title - try to keep it fairly short.
- Photographer's name

Use underscore between the competition title and image title.

Example for an image titled "Rough Seas" entered in the "Open" competition

Open_Rough_Seas_Name

Colour Space

If your images are in the Adobe RGB 1998 colour space, or anything else other than sRGB, then it is recommended that you convert the image to sRGB in your image editing software before submitting it. If you don't, the colours are likely to come out dull and flat and will not do your entry justice.

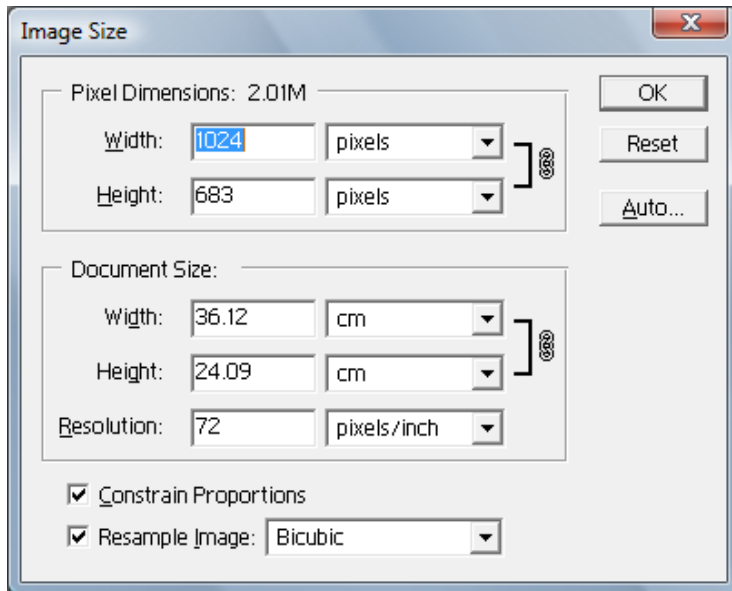
If this means nothing to you, then chances are that you are already using sRGB as it is generally the default colour space that cameras and editors use.

Resizing your image

You should resize your image to fit within the pixel area specified above for the particular image format and aspect ratio. This procedure is for Photoshop CS3 but it is similar for other image editing software.

1. From the Image menu, choose Image Size, the Image Size dialog box is displayed.

Saltburn Photographic Society Welcome Pack



2. Make sure the units you have selected are pixels (top centre of the box).
3. Make sure the Constrain Proportions box is ticked.
4. If your image is in landscape format, set the width to 1024 pixels.
5. If your image is in portrait format, set the height to 768 pixels. The corresponding dimension will adjust automatically.
6. Ensure that your image fits within this 1024 x 768 boundary. Note that the resolution does not need to be changed as it is the actual pixel size that is important. (resolution is only applicable when printing). Click OK to resize your image.
7. It may benefit your image to be sharpened slightly at this point, as the reduction in size (ie throwing away pixels) can make the image appear slightly soft.

A recommended start point for these pixel sizes would be (in Photoshop) : Amount = 100%; Radius = 0.7; Threshold = 0 but you should adjust to taste.

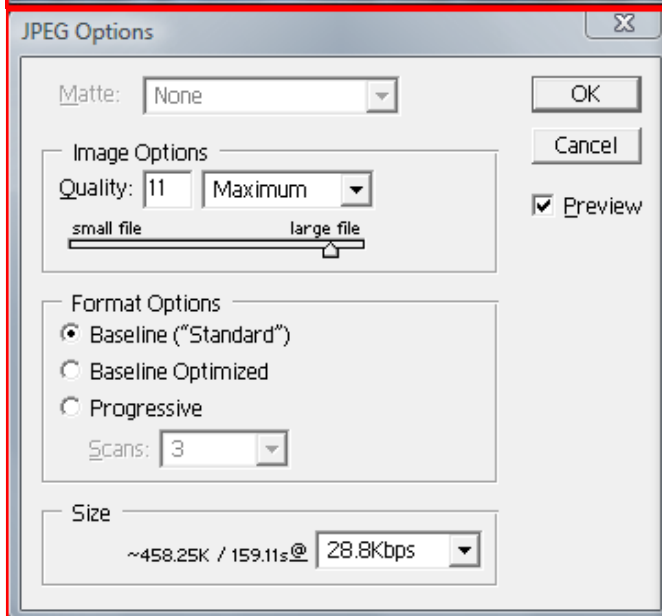
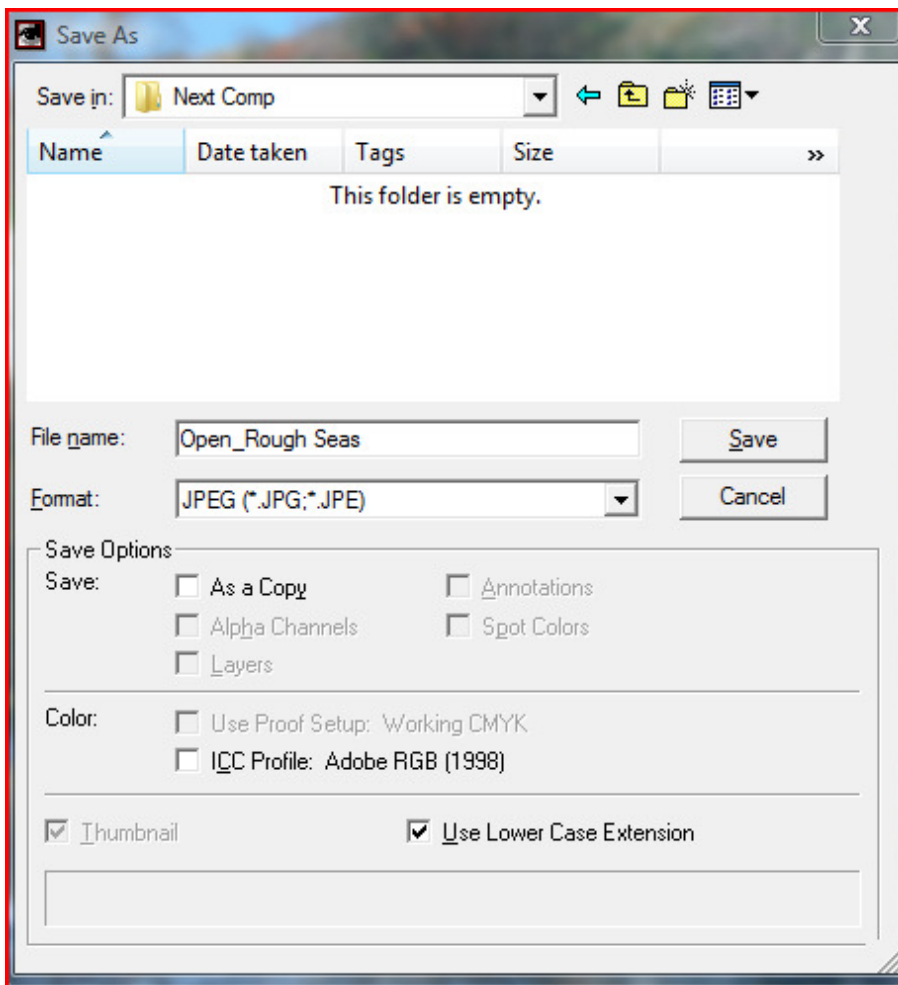
How to create a JPEG file using Adobe Photoshop

These instructions take you through the steps of creating a JPG file in Photoshop CS3 but it is similar for other image editing software.

Saving the Image

1. To save a file as a JPEG file, from the File menu, choose Save As. The Save As dialog is displayed.
2. Select the folder you want to save to. Type in the correct File name (See Image naming convention above)
3. Next make sure the Format field is set to JPEG.
4. Click the Save button, you'll then see the JPEG Options dialog box

Saltburn Photographic Society Welcome Pack



1. Set the image Quality to 10 or 11 using the slider, to give a final file size that is not too large but will retain the quality of the image. Aim for around 500K size, visible in the dialogue box.
2. Make sure the Format Options is set to Baseline ("Standard").
3. Click OK.

Saltburn Photographic Society Welcome Pack

Final preparation for submitting

Copy the final file(s) to a CD or USB drive. Ensure your name and status "Advanced" or Intermediate is shown on CD or USB drive

Submission

Please hand in your CD or USB drive containing your images on the day requested in the programme.

Your CD or USB drive may be collected the week after submission.